

evapolar

wellbots
#1 on smart products

Product Guide

Personal air cooler

Introduction

Congratulations! You bought Evapolar, your personal air cooler. To take full advantage of the device please read the product guide before you start using it.

Intended use:

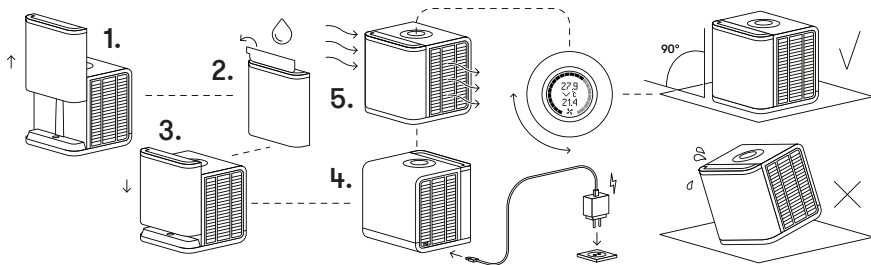
Evapolar is intended to cool and humidify the air creating a local microclimate in the area of 3-4 sq. m (30-45 sq ft.). It also has a purification effect, filtering large dust particles from the air. The best effect can be achieved indoors.

Safety regulations:

- The device will work correctly when placed on a smooth horizontal surface. Tilting it may cause a water leak and damage the device.
- Do not carry the device when it is filled with water. Even after you empty the reservoir, some water will still remain in the internal compartment. Please check the part of this manual about the device transportation.
- For personal safety and proper functionality of the device use only clean, untainted tap water. If the source of water is polluted and you are not sure about its safety, please use distilled water. It is recommended to perform the cleaning and technical maintenance of the device according to the “Device maintenance” section of this product guide.
- The device is not intended for use in a highly polluted environment. Large dust particles, dirt, etc., can seriously affect the longevity of the device’s evaporative cartridge lifecycle.
- The device is not intended for use in a highly polluted environment. Large dust particles, dirt, etc., can seriously affect the longevity of the device’s evaporation cartridge lifecycle.
- Make sure water does not reach the external parts of the device. Do not use it near water, in a swimming pool, in a bathroom, in a laundry room, outdoors when raining or at any other locations with high humidity levels.
- In case of a leak or if water spills to the surface of the device, immediately disconnect the power cord and let the device dry for at least 24 hours.
- Do not place the device under direct sunlight.

- If you do not plan to use the device for a long time, empty the water reservoir and let the device work at maximum power for at least 4 hours so that the cartridge can dry out.
- Only use the original power supply from the package.
- Do not touch the power supply or power cord with wet hands.
- Unplug the device in case of the following: cleaning, technical maintenance, removing/replacing elements, moving the device.
- To maximize the effect the device should be placed on a higher surface, e.g. a table or a cupboard.
- Do not place the device next to a heater or in proximity of any electrical equipment.
- Do not place the device in passageways or any other location from where it can be accidentally knocked over.
- Do not let any foreign objects inside the device.
- Do not place heavy items on top of the device.
- Do not block the front and back grills of the device.
- Do not turn the device upside down; it will disrupt its functionality.
- Do not submerge the device into water or other liquids, see cleaning guide below.
- Do not place open fire sources (candles, etc.) on top of the device.
- People with limited physical, visual or mental abilities or lacking proper experience and/or knowledge should never use the device without supervision of those responsible for their safety or those capable of assistance in using the device.
- The device can be switched off completely only when disconnected from the power supply.
- The manufacturer does not bear any responsibility for any damage arising from failure to comply with this product guide.
- A replaceable evaporative cartridge is designed specifically for this product. If your cartridge has been broken or damaged, you can purchase a replacement at Evapolar.com or with your local retailer.

First start



1. Slide the water reservoir up.
2. Open the lid to fill up the reservoir.
3. Place the reservoir on the base. Make sure it is installed properly.
4. Use the cable to connect the power supply to the device and the power source.
5. The device starts working.

The temperature of the outgoing air will start to decrease in a few minutes. You can vary airflow level using the rotation wheel on the upper part of the device.

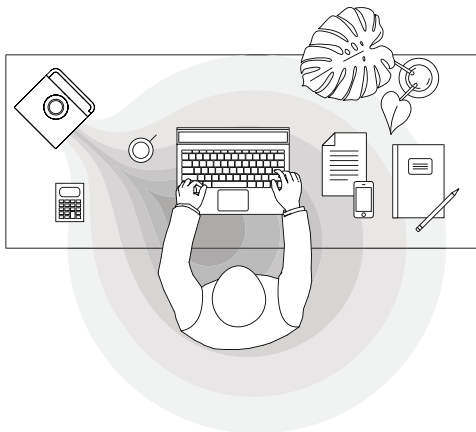
Enjoy your personal microclimate!

Important: During the first use there may appear some technical smell. This is normal and it will vanish completely after several hours of work.

Daily Use

We've made sure you won't have to fine-tune your air cooler for too long. The device is ready to use right after you unpack it. Afterwards, all you need to do is follow a few simple recommendations to make your Evapolar experience as smooth as possible.

Placing the device



The air cooler creates a local comfort zone. To be in the center of that zone place the device within a meter (3 ft.) away from you, with its front grill facing you. To keep the device out of your way, place it slightly aside. This way you will always have room for a laptop or a book.

Filling the reservoir

In order to work properly the device needs only water. You should remove the reservoir on the left side of the device, fill it with water and then place it back. The water will start flowing automatically.

Depending on the quality of the air in the room, the full reservoir should provide from 3 to 5 hours of uninterrupted work. To extend this time you need to fill up the reservoir, place it on the device, wait until the cartridge is full of water and then refill the reservoir. After this operation the running time will be extended by 1 to 3 hours. For instance, this may be useful if you want the device to continue running while you are asleep.

The transparent reservoir lets you assess the water level instantly. It is worth mentioning that the evaporative cartridge will absorb up to 400 ml of water, which means that once the reservoir is empty, the device will continue cooling for another few hours. The default mode will have the device notify you when the water runs out. You can turn off the notifications or change notification colors depending on your liking.

When the water runs out completely, the device will continue working as a regular ventilator. You can use the replaceable reservoir when the device is working, it will not affect its operation.

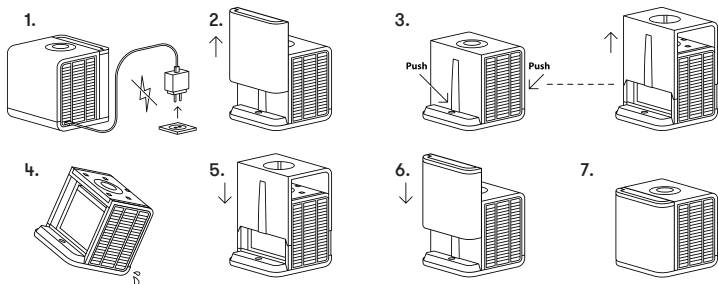
Transportation

Before any kind of transportation the device should be disconnected from the power source.

Besides the water in the transparent reservoir, the device stores some amount of water in the internal tank so that the evaporative cartridge could absorb it. Before transportation, it is highly recommended to empty the water out of the reservoir and let the device work on maximum fan speed for at least one hour to dry the water out from the internal reservoir.

Transportation without drying the water out from the internal reservoir can only be done at your own risk. Water leakage during the transportation is not covered by the warranty. In order to avoid leakage, the device should be positioned horizontally and moved slowly.

In order to remove the water instantly from the internal reservoir and prepare device for transportation, please do the following:



1. Disconnect the device from a power source.
2. Remove the reservoir by sliding it up.
3. Use both hands to lift the upper part of the body. Push on both sides of its bottom part to release the locks and then slide it upwards.
4. Tilt the device to the right while holding the cartridge and drain the water carefully.
5. Put the upper lid of the body back so that it fits the slots.
6. Put the reservoir back in place.
7. The device is ready for transportation.

Important: Even if there is no water in the internal reservoir, the evaporative cartridge could still be wet. Do not transport the device with the wet cartridge for a long time. Please see section “Storage during long periods of no usage” For short transportations make sure that the device with wet cartridge is not isolated in a box or bag with no air flow.

Air parameters

Evapolar works using evaporative cooling so its power changes in various climate conditions. The chart below shows cooling power approximates in various aerial conditions.

Temperature decrease chart				
T (C) / rH (%)	25	30	35	40
30	9.6	11.0	12.4	13.7
40	8.1	9.1	10.2	11.2
50	6.6	7.5	8.3	9.1
60	5.3	5.9	6.5	7.1
70	4.1	4.5	5.0	5.4

Usage modes

The device is created to be used at any location that meets humidity and temperature prerequisites from the previous paragraph. Minimal power requirements allow the device to run even from a portable power bank. Required electricity parameters: voltage 5V, current 2A and up.

Important: Since outside conditions can vary greatly, Evapolar is not responsible for the way the device functions outdoors.

Tuning

You can alter the color and brightness level of the lighting, temperature measurement units and water level indication. All of the above is done through the Menu, see paragraph on Control Panel and Menu.

Device Maintenance

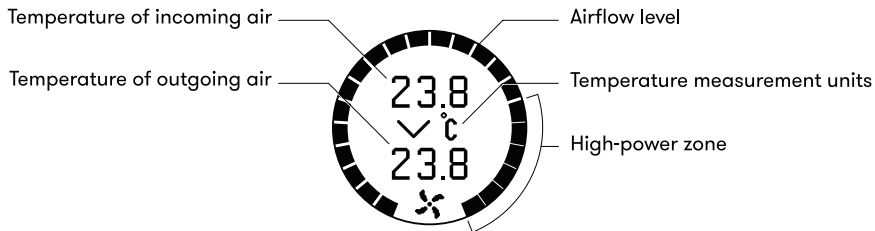
Depending on how often you use the device, its internal camera needs cleaning, see paragraph on Device Maintenance.

Important:

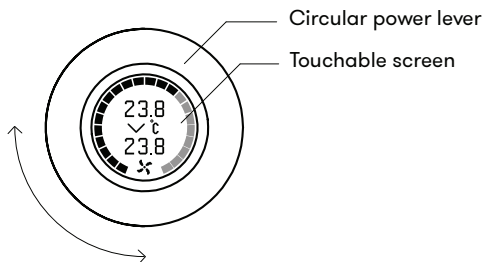
- Make sure that the air cooler is placed on a smooth horizontal surface to avoid leaks and spills.
- Do not use the device in the temperatures exceeding 60° C (140° F). Failing to do so can damage both body and internal components of the device.
- Be careful using aromatic oils or incenses. The device evaporates water intensively so even a small amount of odorous substances can oversaturate the air around you, which is potentially dangerous to your health.
- To avoid spills do not move the device while it contains water. See paragraph on Transportation.
- Be careful when pouring water into the reservoir that is still attached to the device; do not spill water on the body of the device.

Control panel and menu

Start screen



Control elements



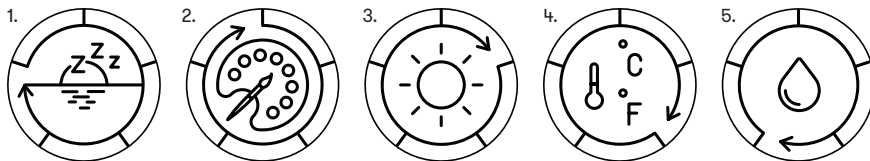
— Circular power lever

By moving the lever you increase or decrease power the airflow level and also move around menu points.

— Touchable screen

A single touch will let you access the menu of the device, select one of the options and confirm your choice. A touch and hold for a few seconds turns the device on/off.

Menu points



1. Night mode

In the night mode the lighting of the device turns off and display lighting becomes minimal. To exit the night mode simply touch the display lightly.

2. Lighting color

You can pick the color of the water reservoir lighting.

3. Lighting brightness

You can pick the brightness level for the water reservoir. You may also simply turn it off.

4. Measurement units

For your convenience units may be either in Centigrade or in Fahrenheit.

5. Notifications

When the evaporative cartridge dries out, the device notifies you about it by changing its color. You can select the notification color or turn this function off entirely.

Device maintenance

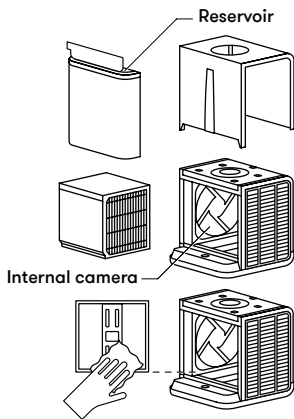
1. Three hours prior to cleaning empty the water out of the reservoir and let the device run for a few hours without water.
2. Prior to actual cleaning disconnect the device from a power source.
3. Extract the cartridge (see paragraph on Cartridge Replacement).
4. Wipe the internal camera with a soft cloth.
5. Wash or wipe the reservoir.
6. Put the device back together and continue using it.

Storage during long periods of no usage

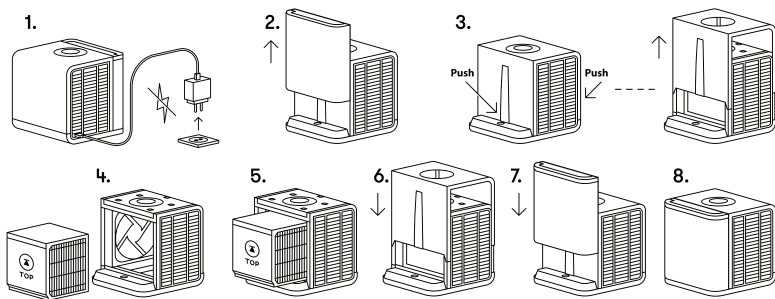
Clean the device (see above), dry it and place in a package (original package is recommended). Store in a dry space in 18° - 25° C (64° - 77° F) temperature.

Important:

- Do not put the device or the cartridge into a bag, box or other container before it is completely dry.
- Fully replace the water in the reservoir at least once a week.
- Use a soft cloth to clean the inside part of the device. Do not clean the device with gasoline, window washing liquid or any organic dissolvent. Warranty does not cover damages caused by improper cleaning.
- Do not wipe the inside of the cartridge, just its outer plastic body.
- Do not stick fingers into the internal camera when the device is in operation.



Replacing the cartridge



1. Disconnect the device from a power source.
2. Remove the reservoir by sliding it up.
3. Use both hands to lift the upper part of the body. Push on both sides of its bottom part to release the locks and then slide it upwards.
4. Take out the old cartridge by moving it aside.
5. Place Put the new cartridge in place of the old one, so that it could go in easily. Check the orientation. Keep pushing until the cartridge is in the center of the device.
6. Put the upper lid of the body back so that it fits the slots.
7. Put the reservoir back in place.
8. The device is ready.

Important:

- Depending on usage and storage, the cartridge can last 6-12 months.
- Poor water quality reduces the longevity of the cartridge.
- The new cartridge can be stored for up to 3 years without losing its evaporation potential.
- When replacing the cartridge do not remove any parts other than those described in this guide.

Troubleshooting

Problem	Possible cause	Solution
The device does not turn on	The device is not connected to power supply	Plug in the device
	The device has been turned off via the control panel	Touch and hold the display
Cold air does not come out of the device	The airflow level is on min	Increase the power using the lever on the control panel
The temperature drop is minimal	The device is out of water	Fill up the reservoir
	The cartridge has expired	Replace the cartridge
	The humidity level in the room is over 70%	Ventilate the room
There's water next to the device	The device has been pushed	Wipe the water and dry the device, as per the guide
	The device has been tilted	Place the device on a smooth horizontal surface and dry, as per this guide
Water from the reservoir does not reach the device	The reservoir is placed incorrectly	Take the reservoir off and place it vertically next to the device

Technical specifications

Power supply	Line 100 – 240 V / 50-60 Hz Other power sources 5V / 2A
Power consumption	10 W
Cooling power	100-350 W
Recommended cooling square/space	4 m ² / 8 m ³ (45 ft ² / 285 ft ³)
Water tank capacity	750 ml
Size	174 x 170 x 170 mm
Weight (without water)	1.3 kg
Working noise level	28-40 dB
Supplied accessories	Cartridge Power cord Power adapter
Working conditions	Humidity <70% Temperature >18C

Legal information

The device complies with the requirements of EU Directives – 2014/35/EU Low Voltage Directive and 2014/30/EU EMC Directive, as well as the following European harmonized standards:

- EN 55014-1:2006/ A1:2009/ A2:2011 - Electromagnetic compatibility. Requirements for household appliances, electric tools and similar apparatus Part 1: Emission
- EN 55014-2:2015 - Electromagnetic compatibility. Requirements for household appliances, electric tools and similar apparatus. Part 2: Immunity. Product family standard
- EN 61000-3-2:2014 Electromagnetic compatibility (EMC). Part 3-2: Limits. Limits for harmonic current emissions (equipment input current ≤16 A per phase)
- EN 61000-3-3:2013 Electromagnetic compatibility (EMC). Part 3-3: Limits Limitation of voltage changes, voltage fluctuations and flicker in public low-voltage supply systems, for equipment with rated current ≤16A per phase and not subject to conditional connection

- EN 60335-1:2012/AC:2014/A11:2014 - Household and similar electrical appliances. Safety. Part 1: General requirements
- EN 60335 -2-40:2003/ A11:2004/ A12:2005/ C1:2006/ A1:2006/ A2:2009/ C2:2010/ A13:2012/ A13/ AC:2013 - Household and similar electrical appliances. Safety. Part 2-40: Particular requirements for electrical heat pumps, air-conditioners and dehumidifiers

The device is marked by the sticker on the inner surface of the casing and contains the following data:

- the manufacturer name,
- the product name,
- the serial number,
- the year of manufacture,
- the power settings (voltage, frequency, maximum power consumption, weight).
- the CE marking.

Warranty

The distributor company selling the device determines the warranty duration and conditions. All air coolers undergo a thorough quality control. Devices and cartridges purchased at evapolar.com fall under warranty details described on the website. Should you have any questions, feel free to email us at support@evapolar.com

The technical maintenance of the device should only be performed by a professional. Unprofessional service can lead to incapacitation of the device and is not covered by the warranty.

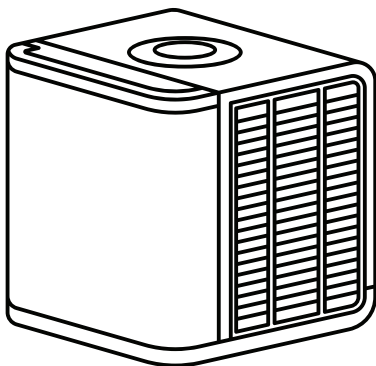
Recycling

At the end of its service life period the product should be recycled according to the recycling procedures in your region.

If you need more help please write to support@evapolar.com

Responsible Party Address:
Evapolar Ltd.
236 Strovolou, Strovolos,
2048 Nicosia, Cyprus

Subject to change without notice!*



2016 Evapolar Ltd.

All rights reserved, including any and all copyrights and rights on Evapolar's trademarks and service marks, if any.